

SATAKE

ROLLERMILL SRM



Satake has a deserved reputation for its commitment to R&D, the most effective method of answering the needs of today's demanding market.

The Satake Roller mill design team has perfected every aspect of the SRM, a roller mill that not only incorporates the very latest technology, but is also simple and user friendly.

A compact machine with great strength and high capacity, the SRM is the state of the art in roller mill technology.

Benefits of the Satake SRM:

1. Rapid roll change facility, reduces downtime
2. Low noise and vibration even at high grinding pressures
3. High level of sanitation with no dust traps and an effective exhaust system
4. No liquid lubricant, no oil leaks

The SRM Automation Package

Complete roller mill automation is a significant move towards total plant automation, reducing the cost of running a mill complex at optimum plant efficiency. Feedroll speed and main motor current data can be networked through the roller mill controllers to the central control system, providing an essential and significant step towards the application of 'Expert Systems'. The new AutoGap allows the operator to store in memory his grinding instructions for each blend to be milled.

Options

Automated Roll Gaps Setting

The roll gap adjustment system operates as a networked series of micro controllers, one for each half roll stand, communicating with a supervisory central control system.

The roll gap adjustment is achieved by means of digital stepper motors similar to those used in high precision CNC machine tools, which operate through toothed belt reduction drives to provide adjustments in units of 10 microns.

Water Cooling System

A modern, fully sealed pressure water cooling system. All connection fittings are of quick release leak proof type to assist maintenance and roll changing.

Roll Scrapers

As an alternative to brushes a Roll Scraper package is available. This incorporates a special hardened and tempered spring carbon steel scraper to clean smooth roll chills. An air cylinder operated lift off system is fitted to disengage the scrapers when out of grind

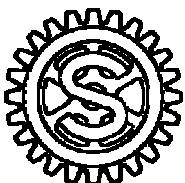
Long Life Rolls

Long Life Rolls are available as an option for breaks and other fluted roll purposes. The special metallurgical properties allow significant extensions of flute profile wear. The life of the rolls can be many times that of a conventional cast chilled iron roll.

Roll Trolley

The roll maintenance trolley is designed for specific use with the rollpack to assist with a rapid change programme.

All Satake products are the subject of continuous development and, as a result, their specification may change and differ in detail from that outlined in this leaflet.



Hiroshima, Japan
Houston, U.S.A.
Stockport, England

Tel: +81 824 20 8560
Tel: +1 713 772 8400
Tel: +44 161 406 3800

Fax: +81 824 20 0865
Fax: +1 713 772 8484
Fax: +44 161 406 3801

www.satake-japan.co.jp
www.satake-usa.com
www.satake.co.uk

JDG02056@nifty.ne.jp
cereal@satake-usa.com
sales@satake.co.uk

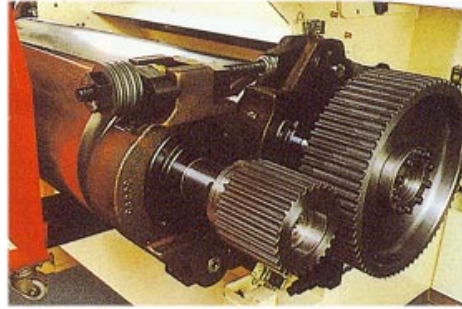
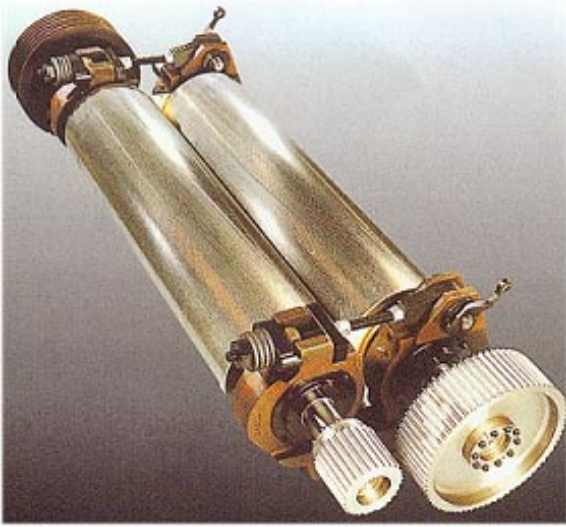
SATAKE

Building on a Tradition of Excellence

SATAKE

ROLLERMILL SRM

Design Features of the Rollermill SRM



Rapid Roll Change (Patents: US 5,673,864, etc)

The grinding rolls, together with their bearings and fittings are mounted on the roll pack assembly. The complete rollpack can be removed and replaced quickly and easily. The fast roll can be changed individually without disturbance to the slow roll and other rollpack components

Air Management

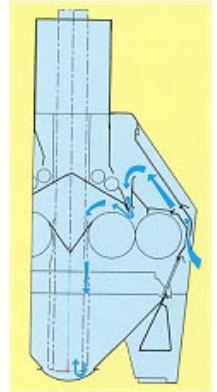
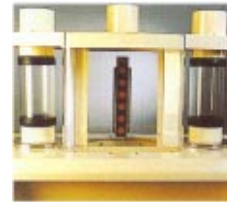
Satake has introduced an anti-fluidisation air management system which maximizes grind efficiency and prevents dust emission

Heavy Duty Brushes

Heavy duty brushes are offered for roll cleaning. The brush brackets are spring loaded and pivoted to move with the roll.

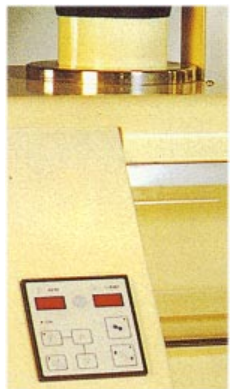
Pneumatic Roll Support

The main grinding rolls are held in the engaged position by compact pneumatic cylinders. The air cylinders are integrated into the rollpack allowing very high grind forces to be achieved.



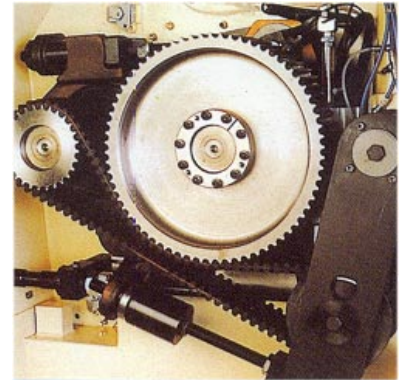
HTD Differential Drive (Patents: GB 2 115 722B, etc)

The innovative double sided tool belt drive reduces noise levels and simplifies routine maintenance.

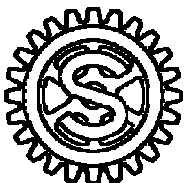


Vari-Speed Feedroll Drive (Patents: US 5,433,391, etc)

The feedroll speed is controlled by an intelligent microprocessor which monitors the stock flow passing a sensor bank on the sight feed unit. This system effectively smoothes out any irregularities in feed to the grinding rolls contributing to consistent mill operation.



All Satake products are the subject of continuous development and, as a result, their specification may change and differ in detail from that outlined in this leaflet.



SATAKE

Building on a Tradition of Excellence

Hiroshima, Japan
Houston, U.S.A.
Stockport, England

Tel: +81 824 20 8560
Tel: + 1 713 772 8400
Tel: +44 161 406 3800

Fax: +81 824 20 0865
Fax: + 1 713 772 8484
Fax: +44 161 406 3801

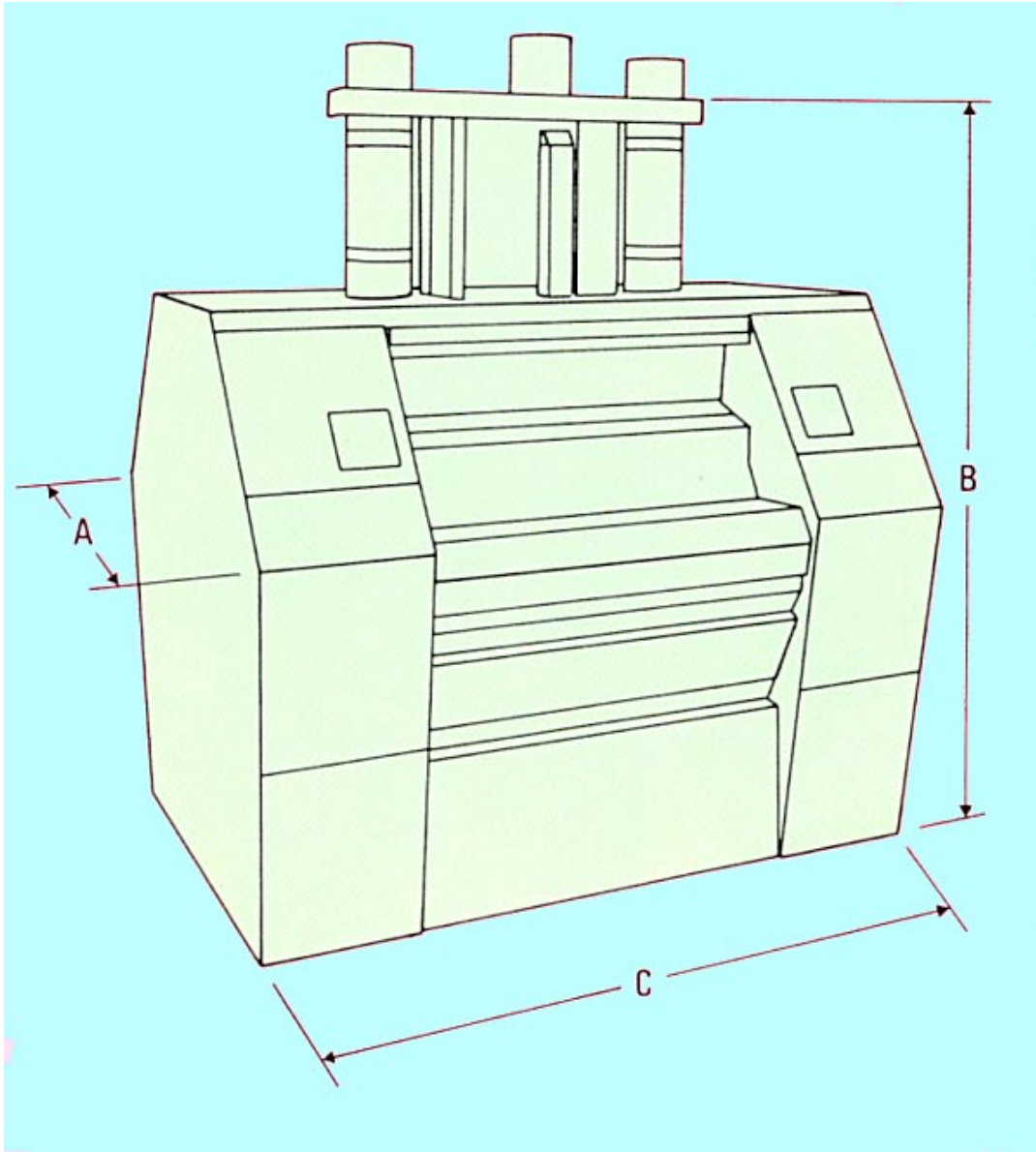
www.satake-japan.co.jp
www.satake-usa.com
www.satake.co.uk

JDG02056@nifty.ne.jp
cereal@satake-usa.com
sales@satake.co.uk

SATAKE

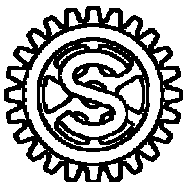
ROLLERMILL SRM

Outside Dimensions of the Rollermill SRM



Overall Dimensions and Weight						
Type	Roll Diameter	Roll Length	A	B	C	Weight
SRM	250mm	1000mm	1360mm	1976mm	1794mm	3100kg
		1250mm			2044mm	3620kg

All Satake products are the subject of continuous development and, as a result, their specification may change and differ in detail from that outlined in this leaflet.



SATAKE

Building on a Tradition of Excellence

Hiroshima, Japan
Houston, U.S.A.
Stockport, England

Tel: +81 824 20 8560
Tel: +1 713 772 8400
Tel: +44 161 406 3800

Fax: +81 824 20 0865
Fax: +1 713 772 8484
Fax: +44 161 406 3801

www.satake-japan.co.jp
www.satake-usa.com
www.satake.co.uk

JDG02056@nifty.ne.jp
cereal@satake-usa.com
sales@satake.co.uk